



## **Sector Partnerships**

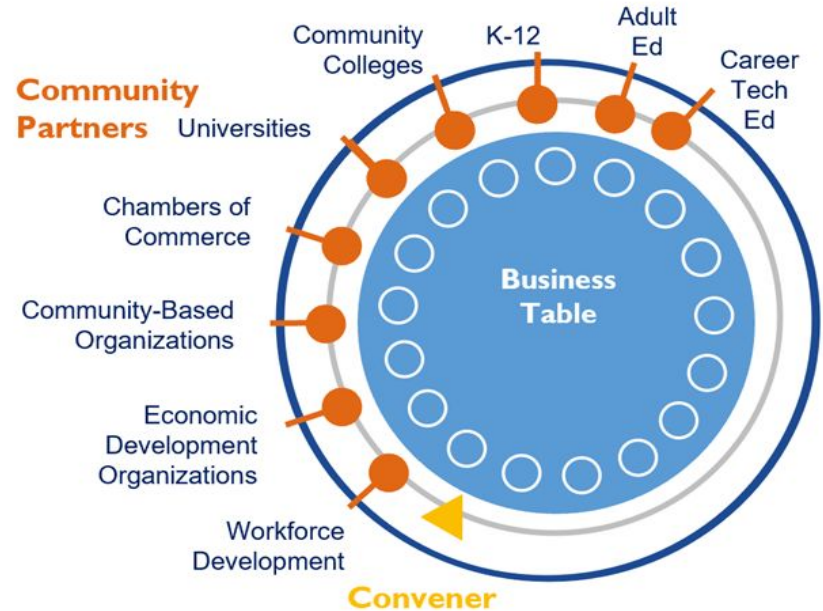
### 2024 Impact Report + Transportation Sector Launch

McKenna Dale  
Manager, Workforce Development  
Chamber of Commerce Hawaii

# Sector Partnerships are Industry Led

## Employers collaborate by:

1. Working closely with educators and supporting student **work-based learning**
2. Identifying in-demand **entry-level jobs**
3. Developing **career pathways** from entry-level jobs
4. Giving input on **desired skills-training**
5. Providing **internships** and other training
6. Entry-level **employment**





# Sector Partnerships in Hawai'i

SECTOR	CONVENERS	ESTABLISHED	ACTION TEAMS	
<b>Healthcare</b>	Healthcare Association of Hawaii (HAH) & Chamber of Commerce	2018	1. Career Awareness 2. Training & Transitions to Employment 3. Curriculum Support	
<b>Technology</b>	Chamber of Commerce Hawaii	2022	1. Career Awareness 2. Training 3. Employment 3. Comms & Advocacy	
<b>Clean Energy/ Skilled Trades</b>	Hawaii State Energy Office (HSEO)	2023	1. Career Awareness 2. Apprenticeships & Training 3. Workforce Retention	
<b>Creative Industries</b>	Hawaii Creative Industries Division	2023	1. Career Awareness 2. Training & Internships 3. AI	
<b>Engineering</b>	Chamber of Commerce Hawaii	2018	1. Career Awareness 2. Women in STEM	3. Math Readiness 4. Talent Recruitment & Retention
<b>Aquaculture</b>	UH Sea Grant	2021	1. Internships 2. Building the K-Career Talent Pipeline	
<b>Natural Resources</b>	KUPU	2022	1. Career Awareness 2. Connecting Students to 'Āina & Community 3. Investing in College & Career Prep., Access, & Transitions	



**Leads  
Hawai'i's  
Sector  
Partnerships  
Community of  
Practice**



**Funding provided by DLIR**



AE Consulting supports all Sector Partnerships in Hawai'i with workforce data, strategy, and logistical support

# Sector Partnerships Cycle

## 1: Labor Market Data

Identifying employment demand in the sector using quantitative data

## 2: Stakeholder Input

Qualitative insights and context from industry experts and educators on challenges and needs

### Data Cycle

## 5: Metrics and Outcomes

Measuring our progress and impact

## 3: Program Development

To address and align industry demand and educator needs

## 4: Implementation

Piloting programs with secondary and postsecondary schools



# 2024 Sector Partnership Impact Report

---

*Chamber of Commerce Hawaii*

# Impact Report

# 2024

## SECTOR PARTNERSHIPS WORKFORCE DEVELOPMENT IMPACT REPORT



**Mahalo to Our Funders & Partners**














## SECTOR PARTNERSHIPS: YEAR IN REVIEW

### Work Based Learning

Building Synthesis Between Industry and Education

**34** High-Quality work-based learning events

**2,263** Students, educators, and school support staff experienced high-quality WBL this school year

**136** Educators experienced an educator externship or professional development

### Hawaii DOE Partner Complexes

Campbell Castle  
Farrington  
Kapolei  
Leilehua  
Pearl City  
Waianae  
Waipahu

**1303** PROFESSIONALS ENGAGED

Education 303  
Non-profit 58  
Government 96  
Industry Professionals 846

### Healthcare

**83** Employers Engaged  
**196** Capstone Enrollments +32.4% from SY 22-23  
**944** Academy Enrollments +13.8% from SY 22-23

### Creative Industries

**28** DOE Educators Engaged  
**110** Employers Engaged  
**104** Employers Engaged  
**405** Pathway Enrollments +72% from SY 20-21  
**19** DOE Schools Engaged

### Technology

**122** Employers Engaged  
**1,209** Students and Educators Engaged +128.5% from SY 22-23  
**1,300** Tech Day Attendees +160% from SY 22-23

### Clean Energy

**131** Employers Engaged  
**729** Good Jobs Enrollments  
**140** CoE Enrollments +21% from SY 22-23  
**26%** Women In STEM +8% from SY 20-21  
**255** Job Placements

[Join Sector Partnerships  
sectorpartnerships@cochawaii.org](mailto:sectorpartnerships@cochawaii.org)

[Learn More  
cochawaii.org/sector-partnerships/](https://cochawaii.org/sector-partnerships/)

# Impact Report

## SECTOR PARTNERSHIPS: YEAR IN REVIEW



### Work Based Learning

Building Synthesis  
Between Industry  
and Education

34

High-Quality  
work-based  
learning  
events



2,263

Students,  
educators, and  
school support  
staff experienced  
high-quality WBL  
this school year



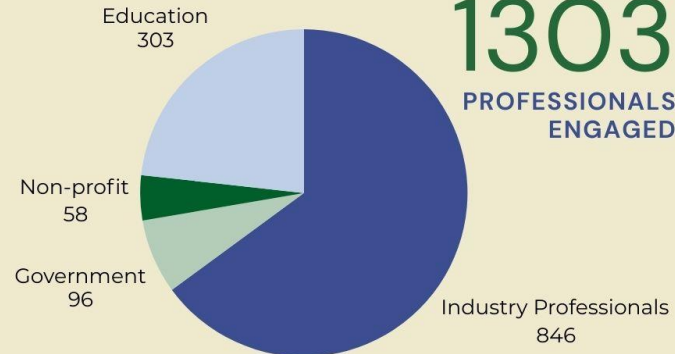
136

Educators  
experienced  
an educator  
externship or  
professional  
development



### Hawaii DOE Partner Complexes

Campbell  
Castle  
Farrington  
Kapolei  
Leilehua  
Pearl City  
Waianae  
Waipahu





# Impact Report

## Healthcare

**83**

Employers  
Engaged

**196**

Capstone  
Enrollments  
*+32.4% from  
SY 22-23*

**944**

Academy Enrollments  
*+19.8% from SY 22-23*

## Technology

**122**

Employers  
Engaged

**1,209**

Students and  
Educators Engaged  
*+128.5% from SY 22-23*

**1,300**

Tech Day Attendees  
*+160% from SY 22-23*

## Engineering

**104**

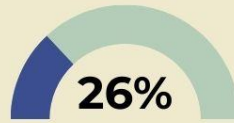
Employers  
Engaged

**405**

Pathway Enrollments  
*+72% from SY 20-21*

**140**

CoE Enrollments  
*+21% from SY 22-23*



**Women In STEM**

*+8% from SY 20-21*

## Creative Industries

**28**

DOE Educators  
Engaged

**110**

Employers  
Engaged

**19**

DOE Schools Engaged

## Clean Energy

**131**

Employers  
Engaged

**729**

Good Jobs  
Enrollments

**255**

Job Placements



**Join Sector Partnerships**  
[sectorpartnerships@cochawaii.org](mailto:sectorpartnerships@cochawaii.org)



**Learn More**  
[cochawaii.org/sector-partnerships/](https://cochawaii.org/sector-partnerships/)



# Impact Report – Engineering Sector Partnership

## ENGINEERING

Established 2018



Sector Impact

The Engineering Sector Partnership is a data-driven workforce development initiative that addresses the shortage of engineering talent in Hawaii. The Sector Partnership unites industry leaders, educators, government officials and community partners to collaboratively strengthen and expand Hawaii's Kindergarten-to-Career talent pipeline. HI Department of Education high schools have dedicated career pathways to prepare students for degree programs and careers.

Employers Engaged

104

Partner School Engineering  
Pathway Enrollment #

405

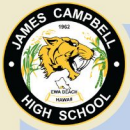
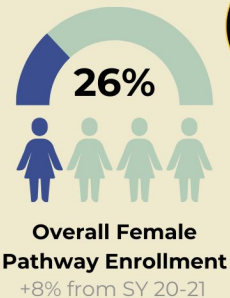
+72% from SY 20-21

Partner School College of  
Engineering Enrollment #

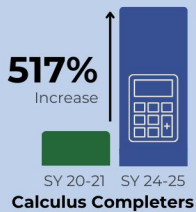
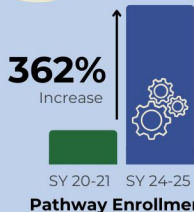


140

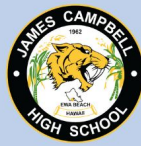
+21% from SY 22-23



Year Over Year Engineering Pathway  
Impact: Campbell Complex



### Partner Schools



Final Year



Incoming SY 25-26



### Priority Workgroups

Career Awareness

Women in STEM

Math Readiness

Talent Recruitment  
and Retention

# Impact Report – Engineering Sector Partnership

## ENGINEERING

Established 2018



Sector Impact

### Workgroup Accomplishments



#### Talent Recruitment and Retention

Kama'aina Come Home, the flagship program of the Talent Recruitment and Retention workgroup, addresses workforce shortages through connecting Hawaii-born engineering talent working/studying on the continent with a network of local engineering professionals who can support their transition to a career at home.



#### Career Awareness

The Career Awareness workgroup seeks to promote engineering careers among elementary and middle school students with the goal of increasing pathway enrollment at partner schools. This year, the workgroup focused on creating and distributing posters featuring high school alumni and their pathway to becoming engineers, inspiring students to envision themselves in the engineering profession.



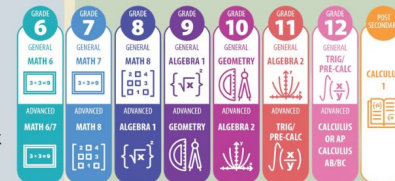
#### Women In STEM

The Mana Wahine Panel is the signature program of the Women in STEM workgroup. Female engineers speak to groups of middle school girls about their personal journeys and how women can thrive in the engineering field. The panel spoke to over 80 students in 2024.



#### Math Readiness

The math readiness workgroup works with educators and students to ensure that high schoolers are prepared to enter degree programs and careers in engineering. Their work has led to the evolution and advancement of partner school's curricular offerings in math.



Recommended Math Pathway

# Transportation Sector Partnership Launch



## TRANSPORTATION SECTOR PARTNERSHIP



**UH and Chamber of Commerce Hawaii were awarded WIOA Recaptured Funds to fund the first 6 months of the Transportation Sector Partnership.**

### **Current Funding (January–June 2025):**

- Develop Transportation Workforce Analysis
- Launch Sector Partnership

# Transportation Sector Partnership Timeline

**January**

**February**

**March**

**April**

**May**

– AE begins  
**Workforce Analysis**

– Send invites to the  
Steering Committee  
– AE conducts  
Stakeholder  
Interviews

– **Hold Steering  
Committee  
Meeting #1**

– Hold Steering  
Committee Meeting  
#2

– **Finalize  
Transportation  
Analysis**

– **Hold Full  
Partnership  
Meeting #1**

– **In person meeting  
with all sectors**

# Mahalo!

**McKenna Dale**, Manager of Workforce  
Development  
[mdale@cochawaii.org](mailto:mdale@cochawaii.org)

**Vanessa Rogers**, VP of Workforce Development  
[Vrogers@cochawaii.org](mailto:Vrogers@cochawaii.org)

**Website: [cochawaii.org/sector-partnerships/](https://cochawaii.org/sector-partnerships/)**